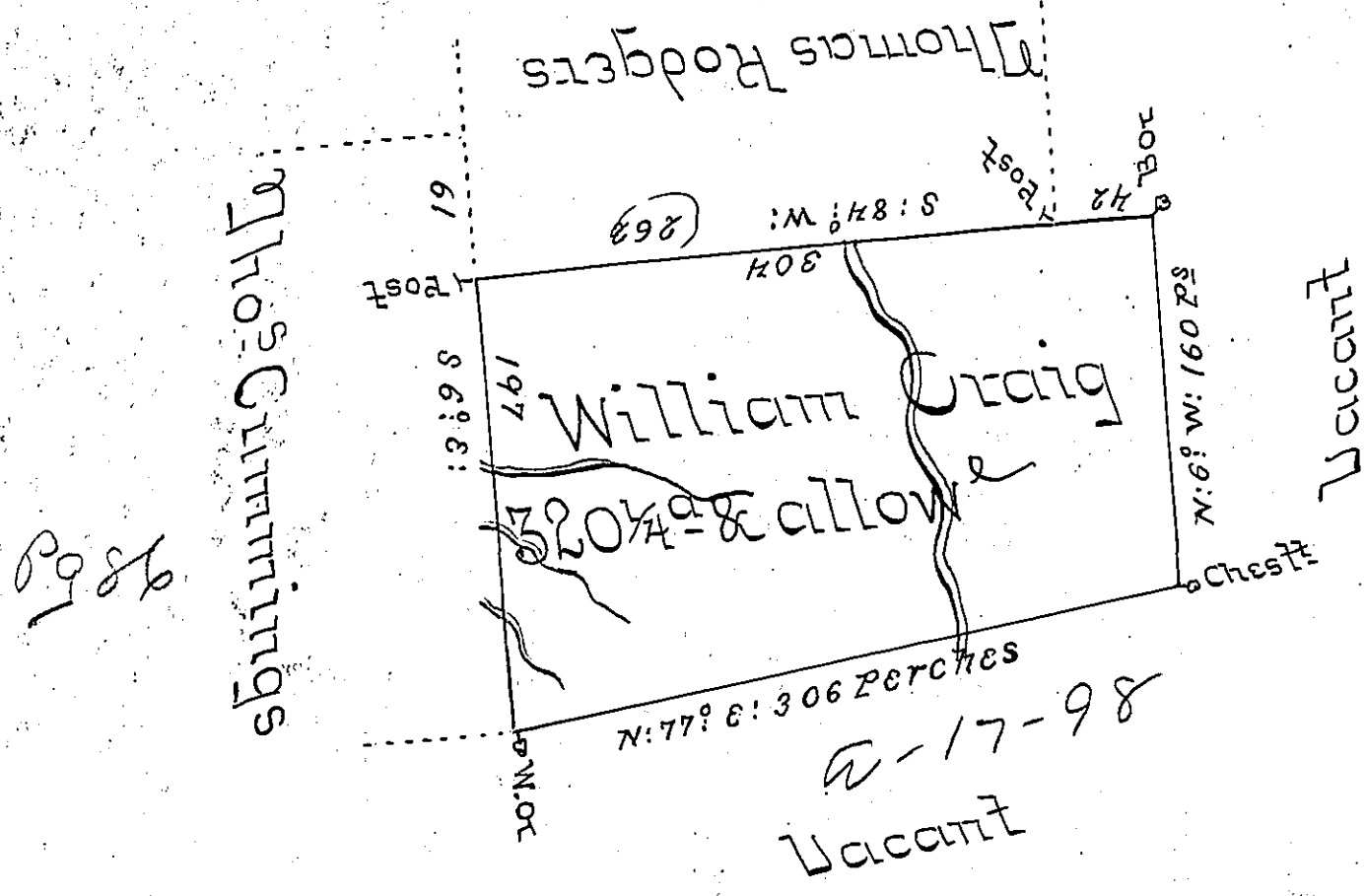


E-124



A Draught of a Tract of Land Called  
 situate on the Waters of Roaring Creek about  
 Seven or eight Miles from Ellis Hughes in the  
 County of Northumberland Containing three  
 hundred & twenty Acres & a quarter of an Acre  
 besides the usual allowance of 6 Per Cent for Rebl.  
 (obl)ta o-b-l-i-t-e-r-a-t-e-d  
 pursuant of a Warrant dated the 17<sup>th</sup> day of Sep-  
 tember 1773

by Chas Stewart D<sup>y</sup> Sur<sup>t</sup>

of John Lukens Esq<sup>r</sup> Survey<sup>r</sup> Gen<sup>l</sup>

IN TESTIMONY that the above is a copy of the original remaining on file in  
 the Department of Internal Affairs of Pennsylvania, made  
 conformably to an Act of Assembly approved the 16th day of  
 February, 1833, I have hereunto set my Hand and caused  
 the Seal of said Department to be affixed at Harrisburg,  
 this eighteenth day of August 1904.

*James B. Brown*  
 Secretary of Internal Affairs.